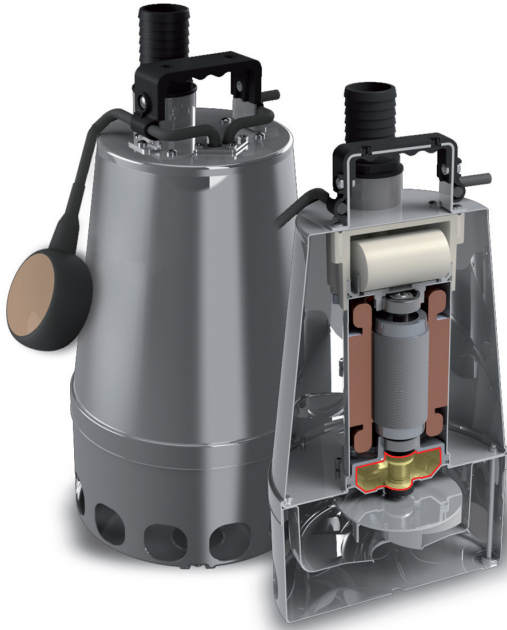




PRODUCT PROFILE

DG STAINLESS STEEL VORTEX DRAINAGE PUMP

ZEN-DGSTEEL37MA



Vortex pump in 304SS, complete with twin mechanical seals in oil bath and through motor cooling which guarantees motor cooling even at low pumping levels.

The pump is characterised by:

- For clean or slightly dirty water, containing solids up to 25mm
- For sewerage plants, livestock farms, car washes, hydro-sanitary applications.
- Max head 8.7 m
- Max flow 180 l/min

Electrical data:

Rated voltage:	240V
Rated output:	0.37 kW
Mains frequency:	50 Hz
Current:	3.1 amps
Capacitor:	8uF
Motor duty:	Continuous
Motor type:	Asynchronous
Motor protection:	In-built thermal overload
Ingress protection:	IP 68
Insulation class:	F
Power cable length:	10 m
Net weight:	6.6 kg
Dimensions:	170Ø x 350H (mm)

Liquid:

Clean water temperature range: 2-35°C

Materials:

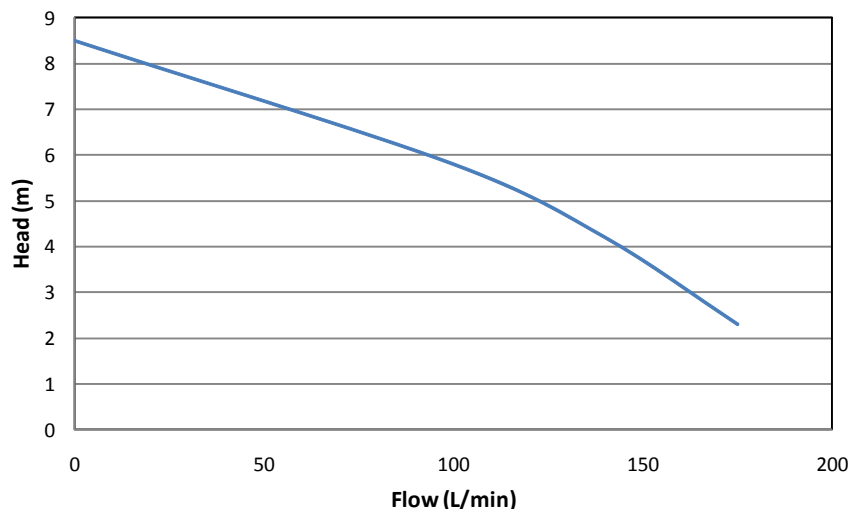
Pump casing, body:	Chrome-nickel steel AISI 304
Strainer, Impeller:	Chrome-nickel steel AISI 304
Shaft:	AISI 420
Seal (x2):	Silicon carbide/graphite alumina mechanical seals in oil chamber
Seal (x1):	V-ring in direct contact with the liquid

Installation:

Maximum operating temperature:	40°C
Maximum immersion depth:	10m
Outlet:	1 1/4" BSPF

2 Year Zenit Pump Warranty - Parts & Labour

ZEN-DGSTEEL37MA



Distributed by **White International Pty Ltd**
A.B.N. 48 000 119 380
PO BOX 304 MILPERRA LPO NSW 2214
Ph: 02 9783 6000 Fax: 02 9783 6001
HOTLINE: 1300 783 601 FAXLINE: 02 9783 6003

Distributed by **White International NZ Ltd**
138 Hugo Johnston Dr, Penrose, Auckland
PO BOX 12704, PENROSE, AUCKLAND
Ph: 09 579 9777 Fax: 09 579 7775
HOTLINE: 0800 509 506 FAXLINE: 0800 804 344
ZEN-DGSTEEL37MA_DS_110707