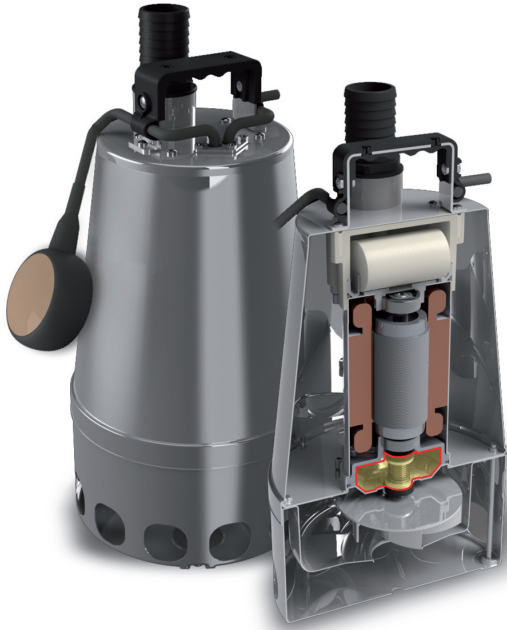




# PRODUCT PROFILE

## DG STAINLESS STEEL VORTEX DRAINAGE PUMP

### ZEN-DGSTEEL75MA



Vortex pump in 304SS, complete with twin mechanical seals in oil bath and through motor cooling which guarantees motor cooling even at low pumping levels.

#### The pump is characterised by:

- For clean or slightly dirty water, containing solids up to 38mm
- For sewerage plants, livestock farms, car washes, hydro-sanitary applications.
- Max head 10 m
- Max flow 360 l/min

#### Electrical data:

Rated voltage:	240V
Rated output:	0.75 kW
Mains frequency:	50 Hz
Current:	5.6 amps
Capacitor:	25uF
Motor duty:	Continuous
Motor type:	Asynchronous
Motor protection:	In-built thermal overload
Ingress protection:	IP 68
Insulation class:	F
Power cable length:	10 m
Net weight:	8.9 kg
Dimensions:	215Ø x 405H (mm)

#### Liquid:

Clean water temperature range: 2-35°C

#### Materials:

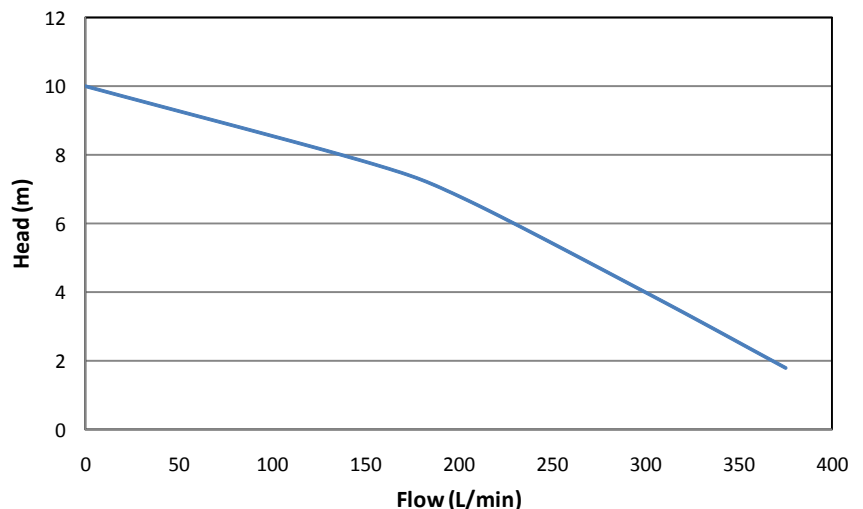
Pump casing, body:	Chrome-nickel steel AISI 304
Strainer, Impeller:	Chrome-nickel steel AISI 304
Shaft:	AISI 420
Seal (x2):	Silicon carbide/graphite alumina mechanical seals in oil chamber
Seal (x1):	V-ring in direct contact with the liquid

#### Installation:

Maximum operating temperature:	40°C
Maximum immersion depth:	10m
Outlet:	1½" BSPF

**2 Year Zenit Pump Warranty - Parts & Labour**

ZEN-DGSTEEL75MA



Distributed by White International Pty Ltd  
A.B.N. 48 000 119 380  
PO BOX 304 MILPERRA LPO NSW 2214  
Ph: 02 9783 6000 Fax: 02 9783 6001  
HOTLINE: 1300 783 601 FAXLINE: 02 9783 6003

Distributed by White International NZ Ltd  
138 Hugo Johnston Dr, Penrose, Auckland  
PO BOX 12704, PENROSE, AUCKLAND  
Ph: 09 579 9777 Fax: 09 579 7775  
HOTLINE: 0800 509 506 FAXLINE: 0800 804 344  
ZEN-DGSTEEL75MA\_DS\_110707